



One Board

"Cloud-Powered Additive Manufacturing"

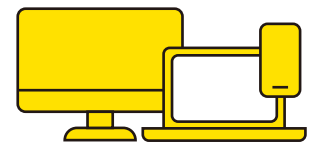
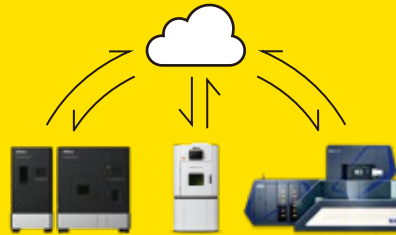


Machines' processing histories can be centrally managed in a single database.

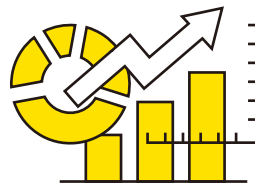


Monitor your additive equipment status and performance from anywhere.

One Board Capabilities



Compatible with smart devices and PCs, and able to deliver email notifications when processing is complete.



Remotely view equipment sensor data using the dashboard.



Service Overview

By digitally transforming the machining process as well as customers' pre- and post-work processes, One Board will enable optimized fleet performance and productivity. The sophisticated service securely stores and utilizes cloud-based data to provide enhanced functions and capabilities, and maximizes service and support from Nikon Group team members, including Nikon SLM Solutions.

Delivering Value

Supported browsers | Google Chrome | Apple Safari | Microsoft Edge

Optimized Performance

Remotely monitor equipment status and key metrics.
Our team also provides timely support to minimize downtime.



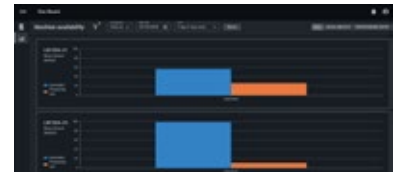
Improved Productivity

Readily displays processing data and event history.
Quickly understand equipment status and necessary actions.



Enhanced Monitoring & Control

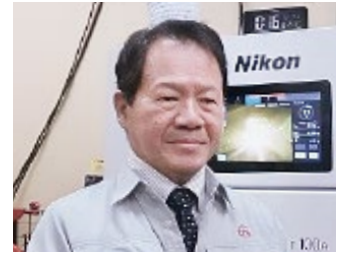
Centralized data and parameter management for optical processing machines. Easily identify and investigate potential machining defects.



Voice of Customer

HIRATSUKA METAL MFG.CO.,LTD.

"In cases of long-term operations / lights-out manufacturing, our operators must be constantly on alert if the machine is operational or if there is enough powder supplied for the processing to be completed. One Board helps to solve that challenge, by allowing real-time monitoring on the machine status via smartphone. No matter where our operators are, during night hours / weekends, we can always have access to the status of our machine. Any event detected during processing is recorded and available for data collection afterwards. In the future, we expect to monitor the processing quality real-time, which is an area we have high anticipation for moving forward."



Fukuoka Industrial Technology Center

Despite the fact that the office and the additive are far apart, we can still monitor the status of the metal 3D printing machine (operation status, powder amount, build progress rate, etc) which is very helpful. It shows the replacement period of the consumables such as filter and cover glass, based on the total time of processing done. In addition, Nikon also checks that data and gives us advice on replacement/cleaning, which helps us tremendously. Even if an error occurs with gas purge or during the build process itself, Nikon helps to analyze the root cause based on their monitoring data, so it speeds up the recovery process for us.



Wadasuke Co., Ltd.

It makes it easier for our personnel and Nikon to work very closely together. It lets us share the exact time of when the error occurred and what actually happened, so we do not have to spend time on that aspect. Ultimately, it allows us to allocate more time on the recovery operation and schedule review, which is very helpful. It has a notification function, which allows us to run the build process with ease while working on other activities at a different location.



NIKON CORPORATION

Nikon Advanced Manufacturing Inc.
1399 Shoreway Road, Belmont, CA 94002-4107, U.S.A.
Tel : +1-650-508-4674
<https://ngpd.nikon.com/en/>

